



ALTERNATORS

CTP alternators utilize the most modern technology to provide unmatched performance for a reliable charging system. Assembled only with premium components to ensure and meet strict quality manufacturing standards. The units are performance tested to guarantee long term dependable service. CTP alternator units are designed and manufactured to withstand the extreme conditions found in today's heavy duty equipment while delivering dependable charging power.

CTP Alternators Available Now

Part No.	Description	Engine Model	Machine
6N9294	24V 35A	C7, 3406C, 627F, 3508B, 3306	140k, 627F, 12H, Industrial, Gas, Petroleum
1125041	24V 50A	3406/C, 3408/E, 3412, 3116	16H, 627F, 16G, 637E, 120H, 826C
1005047	24V 50A	3406/C, 3408/E, 3306, 3116	16h, 627F, 631E, 769C, 12H, 120H, 583R
1693345	24V 60A	3406C, C15, C7, C13, 3412E	16H, TH35-C15I, 771D, 627F, C280-16
2721889	24V 150A	C13, C6.6, C32, C9.3, C7.1, C15	16M, 930K, D11T, 797F, 725C, 938K, D8T
2035492	12V 110A	3044C, C3.4, 3046, 3034,	277C, 259B3, 246C, 939C, D5C, 236, 246
2128622	24V 50A	3064, 3066	311C U, 320C/L
5I7615	N/A	3066	320, 320 L
2128561	24V 54A	C6.4, 3066	323D, 320D
3E7577	24V 75A	3512C, 3408E, 3456, 3306, 3508B, 3406	385B, D8R, 627F, 12H, 797B, 797, 16H
3832556	12V 100A	C6.6, C4.4, 3054C	416E, 414E, 422E, Industrial
1052813	12V 90A	3054/B/C	426C, 428C, 436C, 424D, 416D
1171379	12V 130A	C7, C9, C12, C16, 3126B	460, 85C, 470 R, 480 R, 75C, TH31-C91
3062174	24V 150A	C13, C7, C15, 3512B, C27, 3516C	587T, 583T, D6R, D8T, D7R
1855294	24V 65A	3406E, C7, C13, C9, C15, 3126B	740, D8R, 336D2, 340D2, M325D
2008281	24V 75A	3406E, 3408/E, C15, 3456, 3126B, C9	740, D9N, 623G, 621G, D8L, 651B, 657B

* Other part no. not included in the list are available. Please contact your sales representative if you have any questions. Part Numbers are used for reference purposes only.

CTP Alternators Available Now

Part No.	Description	Engine Model	Machine
2002232	24V 75A	C15, 3406E, C18, 3408E, 3176C, 3196	740B, 657G, 631E, 623G, 633E, 160H
2267683	24V 95A	C32, C18, C27, C7.1, C15, C9.3, C6.6	777F, D11T, 772G, 390F, 563C, 775F, D6T
1978820	24V 95A	3516, C7, C15, 3516B, 3512, 3508B	789C, 793C, D8T, 140K, D9T, 784C
3167251	24V 105A	3516, 3406C, C7, C18, 3412E, 3512B, C15	793C, 789C, 16H, 793B, 5110B, 785B, 777C
7N6118	12V 40A	3204	931, D3/LPG, 910
1052811	12V 55A	3046	939/C, D4C/LGP, D5C, 933
2357133	24V 80A	C13, C9.3, C11, C7.1, C15, C6.6	972H, 366F, 14M, 329E, 352F-VG, 623G
6T1195	12V 61A	4.236	CS323, CP-323
3469827	24V 75A	C4.4	CS54B, CP54B, 420E, CS44, CP44
3469826	24V 55A	C2.2, 3056E, 3024C	CS-563E, Industrial
9G6079	12V 61A	3208, 3204	D3B, Industrial, Truck
2Y8310	28V 21A	3304, 3306/B, 3408B	D4E, D5E, 966C, 930T, 140B, 930R
1077977	24V 70A	3116, 3306, 3196, 3176, 3406C	D6M/LGP, DR7, 365B, 572R, 966G
2047449	24V 100A	3408C, 3456, C9, 3176C	D9R, 836G, D6R, D8R, D7R
5I5178	24V 50A	S6KT	EL200B
6T1395	24V 35A	C15, 3406C, 3408C, G3306B	Gas, Industrial, Petroleum, Marine
3E7892	12V 85A	3408C, C27, 3412E, C32, C9,	HT400, CX31-C9I, TH48-E70-C27I
3491369	12V 85A	3024C	Industrial
3397767	12V	C6.6, C4.4, C3.3, 3054C, 3056	Industrial
3315717	24V 105A	3516C, 3508/B, 3512B, C7, C13	Industrial, Marine
1259597	12V 145A	C7, C13, C9, 3196, 3176, 3126B	Industrial, Petroleum, 95E, 75D
5N5692	24V 45A	3512C, 3406E, C15, C18, C7	Industrial, Truck, Petroleum
7N4784	12V 40A	3204	IT12, 935C, 931C, D3C, 931B, 910, D4C, D3C
8N2268	12V 75A	3204	IT12, 935C, D3C, 931C, 910, D4C, D5C, 931B
9W3043	24V 52A	3054, 3116, 3126, 3208, 3056E	M318, CS-563E, 938G, IT28G, IT38G, 322C/LN,
1092362	24V 55A	3056/E, 3054/T	M322C, M315, 312, 317/N, M318C
2667226	24V 75A	3516B, C18, C7, C32, C9	Marine, Industrial
6T1396	12V 51A	C15, 3406E, G3304, 3306, 3208	Marine, Industrial, Gas
2667227	24V 60A	C15, 3508, 3406C/E, C7, C13, 3456	Marine, Industrial, Truck, Petroleum
2667224	12V 110A	C7, C15, C9, 3406C, 3126B, C18	Marine, Petroleum, Industrial
1492061	12V 65A	4.236	N/A
0969299	24V 30A	N/A	E200B
7G7889	12V 60A	3406C, C13, C7, 3412, C9, C18	Petroleum, Industrial, Generator Set
1008223	12V 55A	3054, 3056	TH62, TH103, TH63, Industrial
3469824	12V 100A	C6.6, C4.4, C3.4	TL1255C, TL943C, TL1055C
1214134	12V 115A	3176B, 3406C, C15, 3456, C13	Truck, Industrial, Petroleum

* Other part no. not included in the list are available. Please contact your sales representative if you have any questions.
Part Numbers are used for reference purposes only.

RELIABILITY AND DURABILITY

In order to deliver a dependable and quality performance, CTP Alternators ensure wear resistance and trustworthiness due to top-notch technology

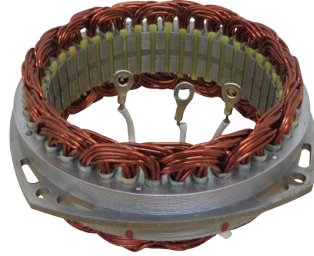
Over-voltage shutdown: Limits voltage if output terminal becomes disconnected from the battery.

Open-sense shutdown: Shuts down alternator if sense terminal goes open.

Load-dump protection: Protects the transistor from transient voltage spikes.



REGULATOR



STATOR

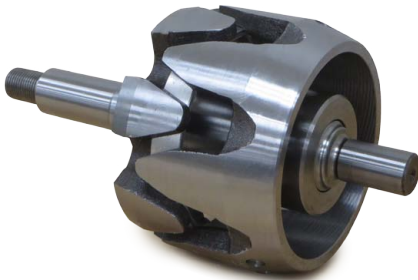
Delivers absolute consistency; 100% tested – Guarantees dependability; Polyester heavy-coat wire. Ensures regular coating for electrical reliability, quality performance, rated 180°C.



BEARING

CTP Bearings are made with top quality seals to extract grease pollution and leakage.

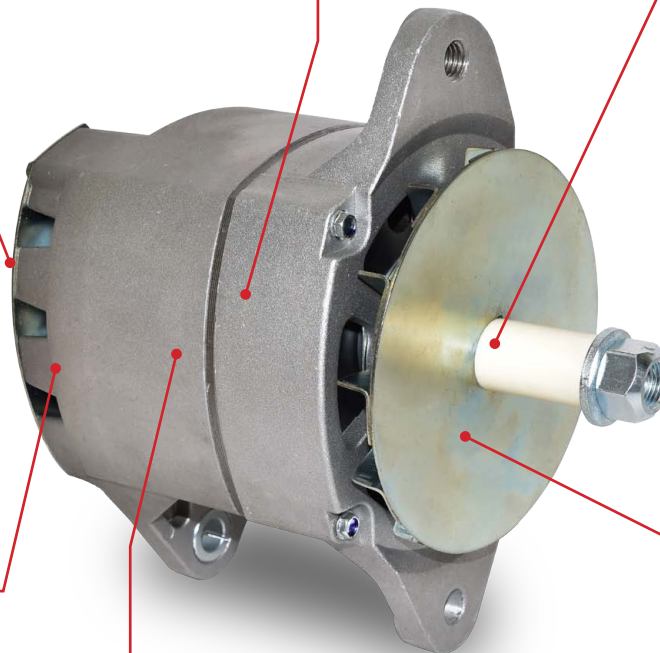
- Bearings use performance grease.
- Protection from excessive temperatures from -40°F up to 392°F (-40°C to 200°C)
- Load-dissipating thickness guarantees long service lifespan and protects it against thermal and motorized shock.



ROTOR

Rotor shafts are CNC-machined and precision-ground for precise proportions and a smooth finish.

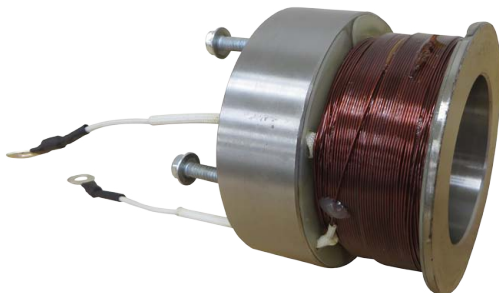
Splines and bearing exteriors are heat-treated. Wire and varnish rated 1800C.



Part No. 6N9294

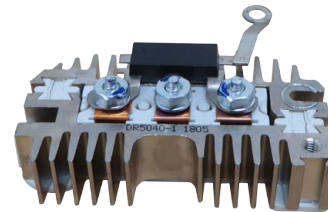
FAN

Extracts heat and keeps the alternator cool.



FIELD COIL

Field Coil has been separated from the rotor; thus, brushes have been eliminated, creating more durability and consistency.



RECTIFIER

Rectifier: It rectifies current from AC to BC.