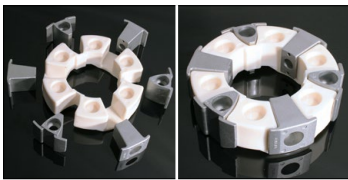




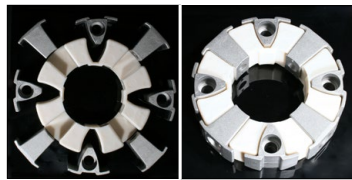
EXCAVATOR COUPLINGS (HYDRAULIC SYSTEM)

CTP Excavator Coupling (Hydraulic System) assemblies are manufactured with the highest quality thermoplastic polyester as well as high temperature rubber (HTR), that are highly resistant to extreme temperatures, chemicals and solvents. Both materials have excellent properties for transferring and absorbing shock load and reducing wear on equipment.

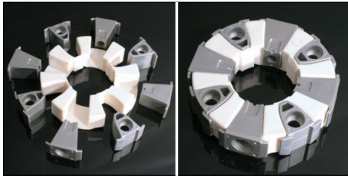
Part No.	Description	F/ Coupling Specifications				Engine Specifications
		Torque (kg-m)		Max. Speed (RPM)	Allowable Temperature (°C)	Power (Hp)
		NOR	PEAK			
CTP30H	Coupling	40	80	4000	-40° ~ 120°	70 ~ 90
CTP50H	Coupling	80	160	4000	-40° ~ 120°	90 ~ 150
CTP110H	Coupling	110	220	3600	-40° ~ 120°	100 ~ 170
CTP140H	Coupling	160	320	3600	-40° ~ 120°	170 ~ 190
CTP160H	Coupling	160	320	3600	-40° ~ 120°	170 ~ 190



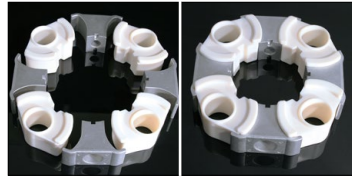
CTP30H



CTP50H



CTP110H



CTP140H



CTP160H



0990149

Also sold separately, CTP Elements for Excavator Couplings

Part No.	Description
CTP30H-E	Element
CTP50H-E	Element
CTP110H-E	Element
CTP140H-E	Element
CTP160H-E	Element

Part No.	Description	Machine Model
0990149**	Coupling (50A)	312

**Centaflex material

* Other part no. not included in the list are available. Please contact your sales representative if you have any questions. Part Numbers are used for reference purposes only.