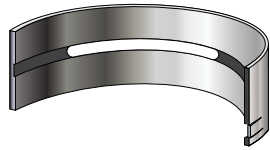




ENGINE BEARINGS FOR 3054 & 3056

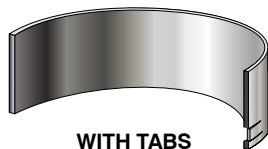
The 3054 & 3056 are some of the most versatile engines for small to midsize heavy-duty equipment. Selecting the correct engine bearings for these engines can be daunting, particularly the connecting rod bearings. Many of the newer engines use fractured type connecting rods. We must be careful when selecting the correct bearing for these engines. Below you will find the most popular crankshaft bearing kits for the 3054 & 3056 engines.



3054 MAIN KITS GROOVED & SLOTTED HOLE

Part No.	Description	Engine	Serial Number Prefix	Application
3537427	KIT-MAIN BEARING (STD)	3054, 3054B	1ER, 1JR, 1NR, 1RR, 1TR, 1WN, 1WR, 1XR, 1ZN, 1ZR, 2CR, 2DR, 2KW, 2WP, 4ZK, 4ZN, 5MF, 5YN, 6EN, 6FK, 6NR, 7ZM, 8BS, 8RN, 8ZN, 9JN, 9KN, 9WM, BFP, BKG, BMC, BML, BNK, CEC, CEG, CHN, CSH, CXP, FDP, TWN	206, 212, 307, 312, 312B L, 312C, 315, 315B L, 317, 416B, 416C, 416D, 420D, 426B, 426C, 428, 428B, 428C, 430D, 436C, 438C, 554, 908, 914G, AP-800C, BG-225C, CB-424, CB-434B, CB-434C
3537428	KIT-MAIN BEARING (0.25MM)			
3537429	KIT-MAIN BEARING (0.50MM)			
3537430	KIT-MAIN BEARING (0.75-MM)			
5185437	KIT-MAIN BEARING (STD)	3054B, C4.4	334, 433, 440, 463, 475, 505, 518, 637, 639, 3G4, 5B4, 5M4, AL3, B5E, BR4, CA4, CA6, CH5, DJC, DKJ, FT3, G54, GTT, HBP, K8X, L4T, LBF, LC4, LP9, LYE, M4C, MAW, ML7, ML8, MT3, MTM, MXB, N6J, NBA, NBH, NPB, PDF, PFE, PR9, RHJ, RSF, RTX, S4P, SCD, SEF, SGB, SXH, SYW, T73, T76, T83, T92, T95, TD6, TF6, TH2, TNG, TX2, TXB, WT3, YBJ, ZBH	AP500, AP555, C4.4 Generator, XQP100, 320, C4.4 Industrial, SPF343C, C4.4B, 313D2, 313D2GC, 313D2-GC, 318D2, 318D2L, 320GC, 320GX, 320D2GC, CB-66B, CB10, CB13, CB15, CB16, CB7, CB8, CP44B, CP54B, CS44B, CS54B, CS64B, CW-16, CW-34, CW12, CW34, TH3510D, TH357D, TH408D, TH514D, TL1055, TL1055D, TL1255, TL1255D, TL642, TL642D, TL943, TL943D, D3K2LGP, D3K2XL, D4K2LGP, D4K2XL, D5K2LGP, D5K2XL, M315D2, M317D2, M318
3537424	KIT-MAIN BEARING (0.25MM)			
2333785	KIT-MAIN BEARING (0.50MM)			
2333786	KIT-MAIN BEARING (0.75-MM)			
0676869	KIT-MAIN BEARING (STD)	3054B, (4.236 PERKINS)	1EN, 1ER, 1FR, 1PM, 1RR, 1WN, 1WR, 1ZN, 2PW, 3DJ, 3PN, 3RN, 4PN, 4ZN, 5JR, 5MF, 5PC, 5WM, 5YS, 6BD, 6EN, 6FK, 6JD, 6LD, 6TL, 7BC, 7EC, 7FL, 7MD, 7ND, 7PD, 7WN, 8RN, 8ZK, BFP, BKG, BML, BPE, BRY, CEC, CSH	416B, 416C, 416D, 420D, 424D, 426C, 428C, 428D, 430D, 432D, 436C, 438C, 438D, 442D, BG-225B, CB-534B, CP-433C, CS-431C, PS-300B, TH83, WE-601B
0332379	KIT-MAIN BEARING (0.25MM)			
0332380	KIT-MAIN BEARING (0.50MM)			
0332381	KIT-MAIN BEARING (0.75-MM)			

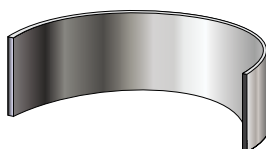
* Other part no. not included in the list are available. Please contact your sales representative if you have any questions. Part Numbers are used for reference purposes only.



3054 ROD KITS

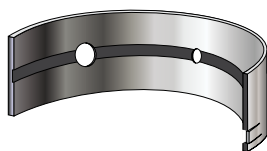
WITH TABS

Part No.	Description	Engine	Serial Number Prefix	Application
4P9944	KIT ROD BEARING (STD)	3054B	LXD, LYF	416B, 416C, 416D, 420D, 424D, 426C, 428C, 428D, 430D, 432D, 436C, 438C, 438D, 442D, BG-225B, CB-534B, CP-433C, CS-431C, PS-300B, TH83
4P9945	KIT ROD BEARING (0.25MM)			
4P9946	KIT ROD BEARING (0.50MM)			
4P9947	KIT ROD BEARING (0.75MM)			
0676886	KIT ROD BEARING (STD)	3054, 3054B	1EN, 1TM, 1WR, 1XR, 1ZN, 2CR, 3GC, 4ZN, 5MF, 5YN, 5YS, 6BD, 6EN, 6JD, 6LD, 7MD, 7ND, 7PD, 8RN, CEC, CEG, CSH	206, 416C, 428C, CB-424, CP-433C, CS-323, CS-323C, CS-431C, PR-75, PS-110, PS-130, PS-180, TH210, TH215
0332382	KIT ROD BEARING (0.25MM)			
0332383	KIT ROD BEARING (0.50MM)			
0332384	KIT ROD BEARING (0.75MM)			



NO TABS (FOR FRACTURED TYPE RODS)

Part No.	Description	Engine	Serial Number Prefix	Application
2217781	KIT ROD BEARING (STD)	3054C, 3054E, C4.4	330, 334, ANF, ASL, ASN, BDR, BKC, BLN, BMC, BNK, BTT, BXE, BZE, C6D, CBD, CJZ, D4M, DAK, DDT, EAT, EC8, ELB, FPS, FSH, H2A, J5R, LBH, LNR, LYB, MBM, MMC, N4D, N4E, PDF, SLA, SLB, SLC, SLD, SLF, SLH, SMJ, SNL, TBE, TDR	315C, 414E, 416D, 416E, 420D, 420E, 422E, 424D, 428D, 428E, 430D, 432D, 432E, 434E, 442D, 914G, AP-650B, AP-800D, C4.4, CB-534D, CB-564D, CD-54, CP-433E, CS-433E, CS-533E, IT14G, M313C
2333788	KIT ROD BEARING (0.25MM)			
2333789	KIT ROD BEARING (0.50MM)			
2333790	KIT ROD BEARING (0.75MM)			
3603986	KIT ROD BEARING (STD)	3054C, C4.4	448, 482, 486, 490, 505, 5B4, B66, BML, BWC, C6D, CA4, CA6, CN4, CN6, DAK, DKD, EAT, FB6, FEB, FT3, GMD, GT8, GTT, H26, HWB, HWC, HWD, HWE, HWG, HWP, HWS, JWJ, JXL, KHC, KJH, KMM, KSF, KW2, L8C, L8H, LCY, LDH, LXD, LYF, M45, M94, MBM, MT3, NBH, NJ5, PXR, RDF, RGS, RHJ, SGB, TD6, TH2, TX2, TXB, TZS, W23, XRA, YDL, ZJT	312D2, 312D2 GC, 312D2 L, 312E, 312E L, 313D2, 313D2 LGP, 314E CR, 314E LCR, 316E L, 318D2 L, 318E L, 414E, 416E, 416F, 420E, 420F, 422E, 422F, 428D, 428E, 428F, 430D, 430E, 430F, 432E, 432F
4687762	KIT ROD BEARING (0.25MM)			
4687769	KIT ROD BEARING (0.50MM)			
4687770	KIT ROD BEARING (0.75MM)			



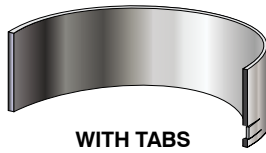
3056 MAIN KITS

GROOVED WITH HOLES

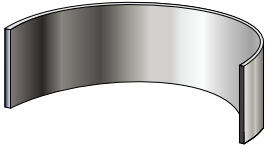
Part No.	Description	Engine	Serial Number Prefix	Application
3537415	KIT-MAIN BEARING (STD)	3056, 3056B	356, 1ML, 7MS, AAB, ASA, ASB, ASG, ASY, ASZ, AYP, B2B, BCZ, BDK, BDX, BDY, BEB, CDG, CKS, CNG, CNX, DAD, DAF, DAJ, DBT, DDA, EEB, EWF, H2C, H2D, H2E, H2F, H2G, KBN, MCP, RBB, SNX, TFW, TWR, WAC, WGX	924G, 924GZ, 930G, AP-655C, BB-760, CP-573E, CP-663E, CS-563E, CS-583E, CS-663E, CS-683E, IT28G, M316C, M318C, M318C MH, M322C
3537416	KIT-MAIN BEARING (0.25MM)			
3537417	KIT-MAIN BEARING (0.50MM)			
3537418	KIT-MAIN BEARING (0.75-MM)			

* Other part no. not included in the list are available. Please contact your sales representative if you have any questions. Part Numbers are used for reference purposes only.

3056 ROD KITS

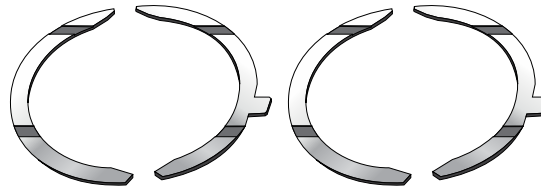


Part No.	Description	Engine	Serial Number Prefix	Application
7W4816	KIT ROD BEARING (STD)	3056, 3056E (6.354 PERKINS)	356, 1KB, 1ML, 2JD, 3PZ, 4GF, 5TC, 8BC, 9SW, AAB, ASA, ASB, ASG, ASY, ASZ, B2B, BCZ, BDK, BDX, BDY, BEB, CDG, CNG, CNX, DAD, DAF, DAJ, DBT, DFZ, EWF, H2C, H2D, H2F, H2G, KBN, RBB, RLS, TFW, TRA, TWR, WAC, WGX	214, 224, 3014, 550B, 560B, 564, 574B, 924G, 924GZ, 930G, AP-655C, BB-760, CP-573E, CP-663E, CS-563E, CS-583E, CS-663E, CS-683E, IT28G, M316C, M318C, M318C MH, M322C
7W4817	KIT ROD BEARING (0.25MM)			
7W4818	KIT ROD BEARING (0.50MM)			
7W4819	KIT ROD BEARING (0.75MM)			



NO TABS (FOR FRACTURED TYPE RODS)

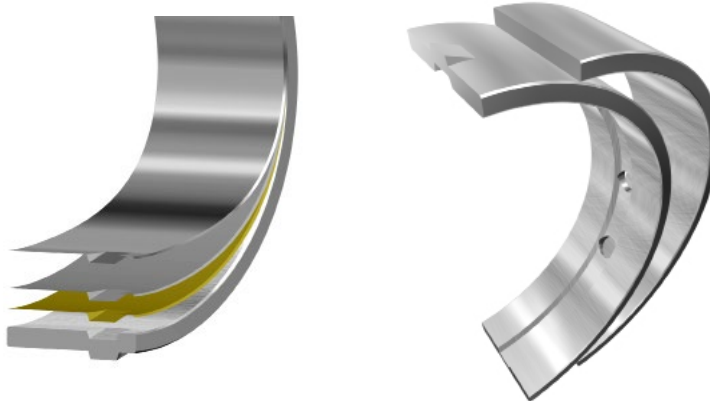
Part No.	Description	Engine	Serial Number Prefix	Application
3532752	KIT ROD BEARING (STD)	3056, 3056E	1ML, 356, 7AK, 7MS, ASA, ASB, ASG, ASY, ASZ, AYP, B2B, BCZ, BDK, BDX, BDY, BEB, CDG, CKS, CNG, CNX, DAD, DAF, DAJ, DBT, DDA, EEB, EWF, H2C, H2D, H2E, H2F, H2G, KBN, MCP, RBB, SNX, TFW, TWR, WAC, WGX	924G, 924GZ, 930G, AP-655C, BB-760, CP-573E, CP-663E, CS-563E, CS-583E, CS-663E, CS-683E, IT28G, M316C, M318C, M318C MH, M322C
3532753	KIT ROD BEARING (0.25MM)			
3532754	KIT ROD BEARING (0.50MM)			
3532755	KIT ROD BEARING (0.75MM)			



UPPER & LOWER (SET OF FOUR)

3054 & 3056 THRUST WASHER KITS

Part No.	Description	Engine	Serial Number Prefix	Application
5185891	KIT THRUST WASHER (STD)	3054, 3056, C4.4	449, 475, 505, 518, 3G4, 5F5, 5M4, AL2, AL3, AT5, CA4, CA6, CN6, DJC, DKJ, FT3, G54, GT8, HBP, JKW, KHJ, LP9, ML5, ML7, ML8, MT3, N6J, NBH, NJ5, PRD, RHJ, SGB, SYW, T73, T79, T83, T95, TD6, TF6, TH2, TH4, TXB, W23, WT3, YBJ, ZBT	AP500, AP555, C4.4 Generator, XQP100, 320, C4.4 Industrial, SPF343C, C4.4B, 313D2, 313D2GC, 313D2-GC, 318D2, 318D2L, 320GC, 320GX, 320D2GC, CB-66B, CB10, CB13, CB15, CB16, CB7, CB8, CP44B, CP54B, CS44B, CS54B, CS64B, CW-16, CW-34, CW12, CW34, TH3510D, TH357D, TH408D, TH514D, TL1055, TL1055D, TL1255, TL1255D, TL642, TL642D, TL943, TL943D, D3K2LGP, D3K2XL, D4K2LGP, D4K2XL, D5K2LGP, D5K2XL, M315D2, M317D2, M318



* Other part no. not included in the list are available. Please contact your sales representative if you have any questions. Part Numbers are used for reference purposes only.