



New CTP Replacement Parts for Heavy Equipment

# CTP ENGINE BEARINGS

# high resistance

## Engine Bearings

CTP Copper/Lead bearings are made of a sintered trimetal with a base alloy of copper, lead and tin with a nickel dam and Babbitt top layer. The F780 alloy has a higher load carrying capacity than aluminum or other copper/lead alloy. As a result of this advanced technology material, F780 will provide longer life in normal operation and significantly improved fatigue resistance under extreme operating conditions.

We also have available engine bearings made of alluminum alloy and other materials.

## High Performance Copper/Lead Bearings

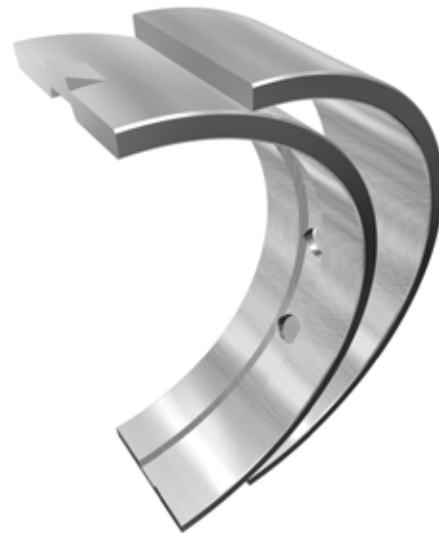
Part No. Main Bearing	Size (inches)	Engine Model	Part No. Con. Rod Bearing
5I7588	Standard	3066	5I7637
5I7784	.010	3066	5I7794
5I7785	.020	3066	5I7795
5I7786	.030	3066	5I7796
1011530	Standard	3114 3116	7W9415
1450163	.010	3114 3116	7C6976
1450165	.020	3114 3116	7C6977
7C6973	.030	3114 3116	N/A
1077708	Standard	3114 3116	7W9415
1450162	.010	3114 3116	7C6976
1450164	.020	3114 3116	7C6977
7C6963	.030	3114 3116	N/A
1077708	Standard	3126	7W9415
1450162	.010	3126	7C6976
1450164	.020	3126	7C6977
7C6963	.030	3126	N/A

Quality With Value Guaranteed™



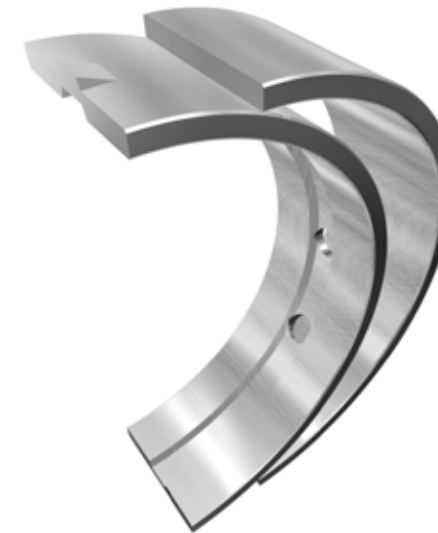
# CTP ENGINE BEARINGS

Part No. Main Bearing	Size (inches)	Engine Model	Part No. Con. Rod Bearing
4W8092	Standard	3145, 3150, 3160, 3208	9N5923
8N9022	.010	3145, 3150, 3160, 3208	9N5924
8N9023	.020	3145, 3150, 3160, 3208	9N5925
8N9023-030*	.030	3145, 3150, 3160, 3208	9N5925-030*
8N9023-040*	.040	3145, 3150, 3160, 3208	9N5925-040*
8N9020	.050	3145, 3150, 3160, 3208	9N5926
4W8093	Standard	3204	8N6308
8N8976	.010	3204	1N3821
8N8972	.020	3204	1N3822
8N8972-030*	.030	3204	1N3822-030*
8N8972-040*	.040	3204	1N3822-040*
8N8974	.050	3204	1W3906
4W8092	Standard	3204	8N6308
8N9022	.010	3204	1N3821
8N9023	.020	3204	1N3822
8N9023-030*	.030	3204	1N3822-030*
8N9023-040*	.040	3204	1N3822-040*
8N9020	.050	3204	1W3906
8N8973	Standard	3204	8N6308
8N8971	.020	3204	1N3822
8N8975	.050	3204	1W3906
1W0312	Standard	3204	8N6308
1W1661	.010	3204	1N3821
1W1662	.020	3204	1N3822
1W1663	.050	3204	1W3906
4W8093	Standard	3208 Late	7E7894
8N8976	.010	3208 Late	9N5920
8N8972	.020	3208 Late	9N5921
8N8972-030*	.030	3208 Late	9N5921-030*
8N8972-040*	.040	3208 Late	9N5921-040*
8N8974	.050	3208 Late	9N5922
4W8092	Standard	3208 Late	7E7894



# CTP ENGINE BEARINGS

Part No. Main Bearing	Size (inches)	Engine Model	Part No. Con. Rod Bearing
8N9022	.010	3208 Late	9N5920
8N9023	.020	3208 Late	9N5921
8N9023-030*	.030	3208 Late	9N5921-030*
8N9023-040*	.040	3208 Late	9N5921-040*
8N9020	.050	3208 Late	9N5922
4W8091	Standard	3208 3160	9N5923
8N9065	.010	3208 3160	9N5924
8N9064	.020	3208 3160	9N5925
8N9064-030*	.030	3208 3160	9N5925-030*
8N9064-040*	.040	3208 3160	9N5925-040*
4W5738	Standard	3306	8N8220
8N8225	.010	3306	8N8221
8N8226	.020	3306	8N8222
8N8227	.030	3306	8N8223
8N8227-040*	.040	3306	8N8223-040*
8N8227-050*	.050	3306	8N8223-050*
8N8227-060*	.060	3306	8N8223-060*
8N8228	Standard	3306	8N8220
8N8229	.010	3306	8N8221
4W5492	Standard	3406 3406B 3408 3408B 3412 3412B	9Y9497
4W5492-010*	.010	3406 3406B 3408 3408B 3412 3412B	9Y9497-010*
4W5698	.025	3406 3406B 3408 3408B 3412 3412B	4W5702
4W5698-030*	.030	3406 3406B 3408 3408B 3412 3412B	4W5702-030*
4W5698-040*	.040	3406 3406B 3408 3408B 3412 3412B	4W5702-040*
4W5699	.050	3406 3406B 3408 3408B 3412 3412B	4W5703
4W5700	Standard	3408 3408B 3412	9Y9497
4W5701	.025	3408 3408B 3412	4W5702
4W5492	Standard	3406C 3406E	9Y7735
4W5492-010*	.010	3406C 3406E	9Y7735-010*
4W5698	.025	3406C 3406E	7E0558
4W5698-030*	.030	3406C 3406E	N/A
4W5698-040*	.040	3406C 3406E	N/A





# CTP ENGINE BEARINGS

Part No. Main Bearing	Size (inches)	Engine Model	Part No. Con. Rod Bearing
4W5699	.050	3406C 3406E	7E0559
1496031	Standard	3508 3508B 3512 3512B	1077330
1050254	.025	3508, 3508B, 3512, 3512B	1077331
1050255	.050	3508, 3508B, 3512, 3512B	1077332
1N4316	Standard	D353, G353D	1N4336
1N4319	.025	D353, G353D	1N4337
1N4322	.050	D353, G353D	1N4338
7W2138	Standard	Tractors 619C	7W2136
8N5346	.025	Tractors 619C	8N5339
8N5347	.050	Tractors 619C	8N5338
8N7764	Standard	D379, G379	8N7769
8N7765	.025	D379, G380	8N7770
8N7766	.050	D379, G381	8N7771
8N7923	Standard	Tractors D7E	8N7933
8N7924	.025	Tractors D7E	8N7934
8N7925	.050	Tractors D7E	8N7935

## \*Special Oversizes in Stock. Please use part number as described (- followed by size)

The sizes shown on this reference chart are given in inches. There is a gradual change in the industry to the use of millimeters instead of inches for size identification marks on engine main and connecting rod bearings. The chart below shows a comparison of millimeter to inch dimensions for different sizes of bearings.

Inches	Milimeters
0.005	0.13
0.010	0.25
0.020	0.50
0.025	0.64
0.030	0.75
0.050	1.27

Conversion Factors: To change millimeters to inches, multiply millimeters by .03937. To change inches to millimeters, multiply inches by 25.4.

Part Numbers are used for reference purposes only.

All information and data provided in this catalogue have been obtained from reliable sources. In the event that any of this information is incorrect, CTP can assume no responsibility. CTP will accept no claims based on any information contained in this catalogue.